

27 FEBRUARY TO 21 MARCH 2009

B O U R N E

Bourne Fine Art Limited
6 Dundas Street • Edinburgh EH3 6HZ
Telephone 0131 557 4050
Email art@bournefineart.com
www.bournefineart.com

Front cover:
January Day
oil on canvas / 90 x 110 cm / 35 x 43 in



CHARLES SIMPSON: **Snow** and other paintings

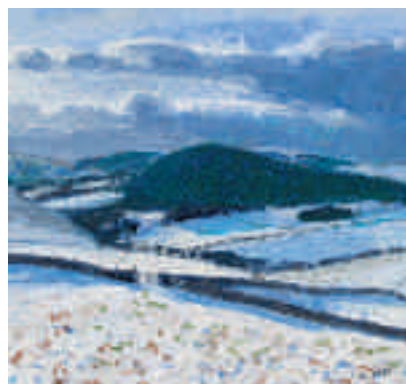
December Light, Yair Hill

oil on canvas / 46 x 55 cm / 18 x 22 in

B O U R N E F I N E A R T • 2 0 0 9



Cattle on the Hill
Loch Broom
Grey Winter
mixed media
19 x 20.5 cm / 7.5 x 8 in



Kilchattan Morning,
Colonsay
Yair Hill
North Coast
mixed media
19 x 20.5 cm / 7.5 x 8 in



Covered in Snow
Sango Bay
Harsh Winter
mixed media
19 x 20.5 cm / 7.5 x 8 in

THE TWO Scottish painters I have always most admired are David Donaldson and Joan Eardley. Donaldson was a major influence on many painters of my generation from Glasgow School of Art. His *Annette and the Elders* is to me one of the greatest Scottish paintings of the twentieth century. Since a student I have also loved the work of Joan Eardley. The Eardley retrospective at the RSA in 2007 was one of the best exhibitions I have ever seen: the large seascapes *The Wave*, *Foam and Blue Sky* and *The Sea* are so magnificent and moving. There was nothing cerebral or contrived about the work of Donaldson or Eardley. They both painted instinctively and with such an intense love of paint and their subject. I cannot paint with their boldness, verve, expression or sureness. However, dare I say that I too can't help but paint according to my instincts, and also paint what I love and understand.

All my life I have loved the north-west coast of Scotland and so it is no surprise that that is what I paint. When I moved to the Borders eighteen years ago I had great difficulty coming to terms, as a painter, with the rough hill farm landscape around me. Even now I rarely paint a spring, summer or autumn Borders landscape, much as I love it. But when the snow falls in the Borders it is a different matter and the landscape undergoes a metamorphosis for a brief spell. Then I am off, trudging round Whytbank, along the track to Torwoodlee or up Mains Hill opposite my cottage. The lack of good snow cover in the last few years has been frustrating but I have been blessed in 2008 with some beautiful snow in the Borders.

CHARLES SIMPSON



Winter Morning

oil on canvas / 90 x 110 cm / 35 x 43 in



Snow Field

oil on canvas / 90 x 110 cm / 35 x 43 in



Low Tide, Kiloran
oil on canvas / 46 x 55 cm / 18 x 22 in



Colonsay Wave
oil on canvas / 46 x 55 cm / 18 x 22 in



Path to Cable Bay

oil on canvas / 80 x 100 cm / 31.5 x 39 in



Snow, Ferniehirst Road
oil on canvas / 60 x 80 cm / 24 x 31.5 in



Open Gate, Hillend
oil on canvas / 46 x 55 cm / 18 x 22 in



Heavy Snow
oil on canvas / 46 x 55 cm / 18 x 22 in



Oronsay Beach

oil on canvas / 50 x 100 cm / 19.5 x 39 in



Colonsay Sea

oil on canvas / 80 x 100 cm / 31.5 x 39 in



Farm Gate, towards Meigle Hill
oil on canvas / 120 x 150 cm / 47 x 59 in



Tracks to Torwoodlee
oil on canvas / 120 x 150 cm / 47 x 59 in



Durness Landscape
oil on canvas / 60 x 90 cm / 24 x 35.5 in



Colonsay Hens

oil on canvas / 70 x 80 cm / 27.5 x 31.5 in



Winter Gate

oil on canvas / 60 x 80 cm / 24 x 31.5 in



Home & Studio, Winter
oil on canvas / 40 x 40 cm / 15.5 x 15.5 in



Snow Gate
oil on canvas / 40 x 40 cm / 15.5 x 15.5 in



Balnakeil Bay

oil on canvas / 80 x 120 cm / 31.5 x 47 in



Track

oil on canvas / 80 x 120 cm / 31.5 x 47 in



Sandbank, Colonsay
oil on canvas / 50 x 100 cm / 19.5 x 39 in



Kiloran Wave

oil on canvas / 70 x 80 cm / 27.5 x 31.5 in



Corner of the Garden, Colonsay
oil on canvas / 50 x 60 cm / 19.5 x 23.5 in



Balnakeil

oil on canvas / 50 x 60 cm / 19.5 x 23.5 in



Line of Trees

oil on canvas / 60 x 80 cm / 24 x 31.5 in



Oronsay Window

oil on canvas / 30 x 30 cm / 12 x 12 in



Durness Window

oil on canvas / 30 x 30 cm / 12 x 12 in

CHARLES SIMPSON

Born 1952

Educated at Alloa Academy, Alloa

1970-75 Studied at Glasgow School of Art

Graduated with BA(Hons).

1975-90 Graphic Designer in Edinburgh

1990 Moved to the Scottish Borders to work as an
artist and freelance designer.

1999 Became full-time artist.

SOLO EXHIBITIONS

1991 — Macaulay Gallery, Stenton

1992 — Macaulay Gallery, Stenton

1996 — Open Eye Gallery, Edinburgh

1998 — Open Eye Gallery, Edinburgh

1998 — Ainscough Contemporary Art, London

1999 — Tolquhon Gallery, Ellon, Aberdeenshire

2000 — Dundas Street Gallery, Edinburgh

2000 — Ainscough Contemporary Art, London

2001 — Dundas Street Gallery, Edinburgh

2002 — ArtLondon (Ainscough Contemporary Art)

2002 — Dundas Street Gallery, Edinburgh

2003 — Panter & Hall, London

2004 — Dundas Street Gallery, Edinburgh

2004 — Panter & Hall, London

2005 — Olympia Antiques Fair, London
(Panter & Hall)

2005 — Bourne Fine Art, Edinburgh

2006 — Panter & Hall, London

2007 — Bourne Fine Art, Edinburgh

2008 — Panter & Hall, London

RECENT SELECTED EXHIBITIONS

2001 — ArtLondon (Ainscough Contemporary Art)

2003 — Bourne Fine Art, The China Club, Hong Kong

2003 — Invited artist, *The Discerning Eye*,
Mall Galleries, London

Awarded Chairman's Purchase Prize


2005 — ArtLondon (Panter & Hall)

2006 — ArtLondon (Panter & Hall)

2007 — ArtLondon (Panter & Hall)

2008 — Richard Hagen, Worcestershire

2008 — ArtLondon (Panter & Hall)



Published by Bourne Fine Art
part of The Fine Art Society
for the exhibition at
6 Dundas Street, Edinburgh
27 February to 21 March 2009

Designed by Charles Simpson
Photography by John McKenzie
Additional photography by Charles Simpson
Printed in Scotland by Stewarts

Another Wave
oil on canvas / 46 x 55 cm / 18 x 22 in